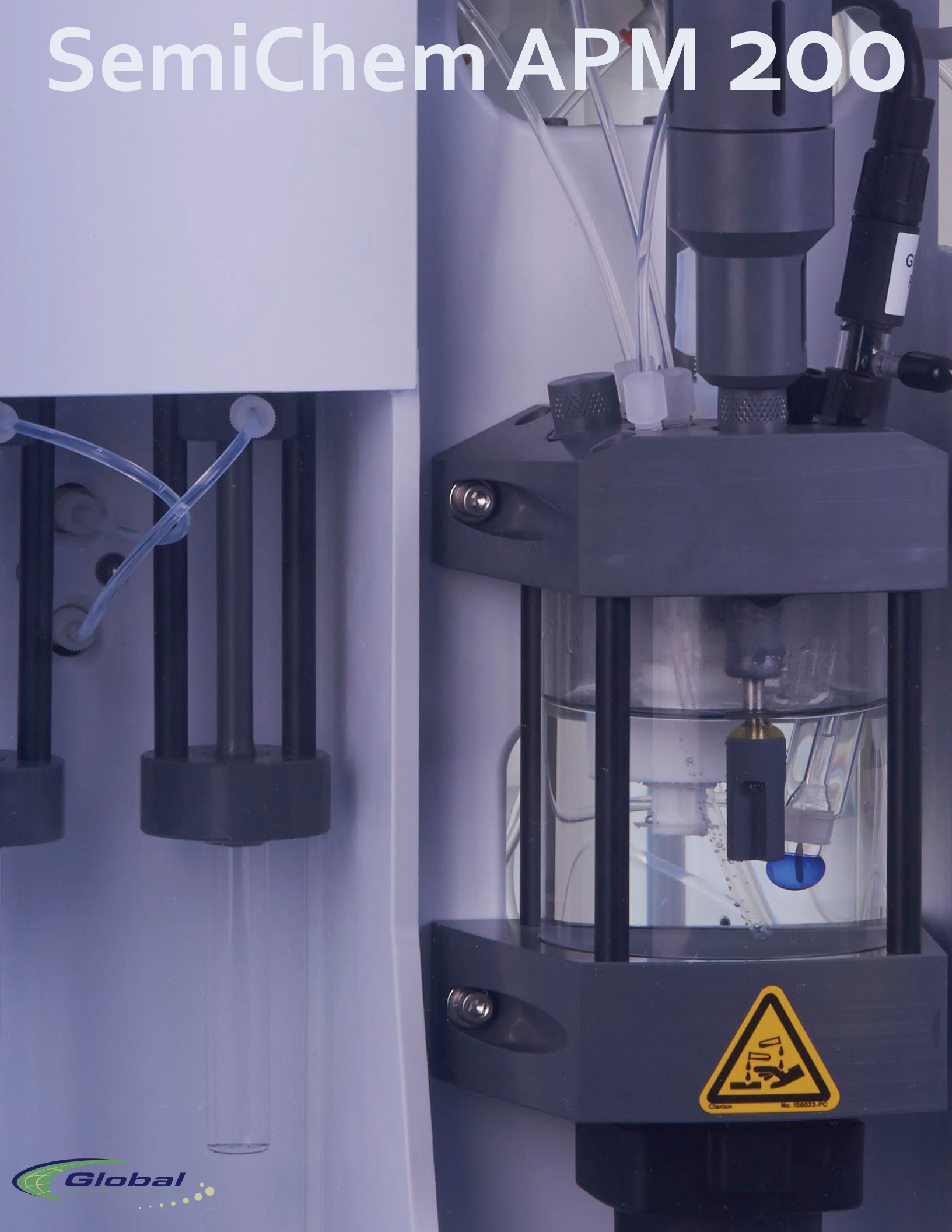


SemiChem APM 200



Advantages Applications

Increased tool throughput	Copper CMP
Decreased chemical costs	Tungsten CMP
Real time process monitoring	Wet-Etch
Insurance against batch loss	Cleans
Improved cost of ownership	DSP+
	Nitride Etch
	PAN Etch
	Piranha Etch
	HF



Global Measurement Technologies' SemiChem Advanced Process Monitor offers process engineers the accuracy, reliability and flexibility for a higher degree of efficiency and consistency to meet the demands for higher yield and zero defect tolerance. In the ultra-competitive microelectronics industry, the most advanced facilities can ill afford highly expensive processes without the use of sophisticated monitoring and control to ensure consistent wafer manufacturing.

Quantitative chemical concentration is obtained with the SemiChem. Full on-line chemical monitoring allows real time correction of bath composition and therefore stable control of the process conditions; product consistency is maintained.

Product yields are increased when a quantitative process composition is known. Variations that can affect product quality are immediately apparent and can be quickly correct before loss of product quality.

SemiChem APM

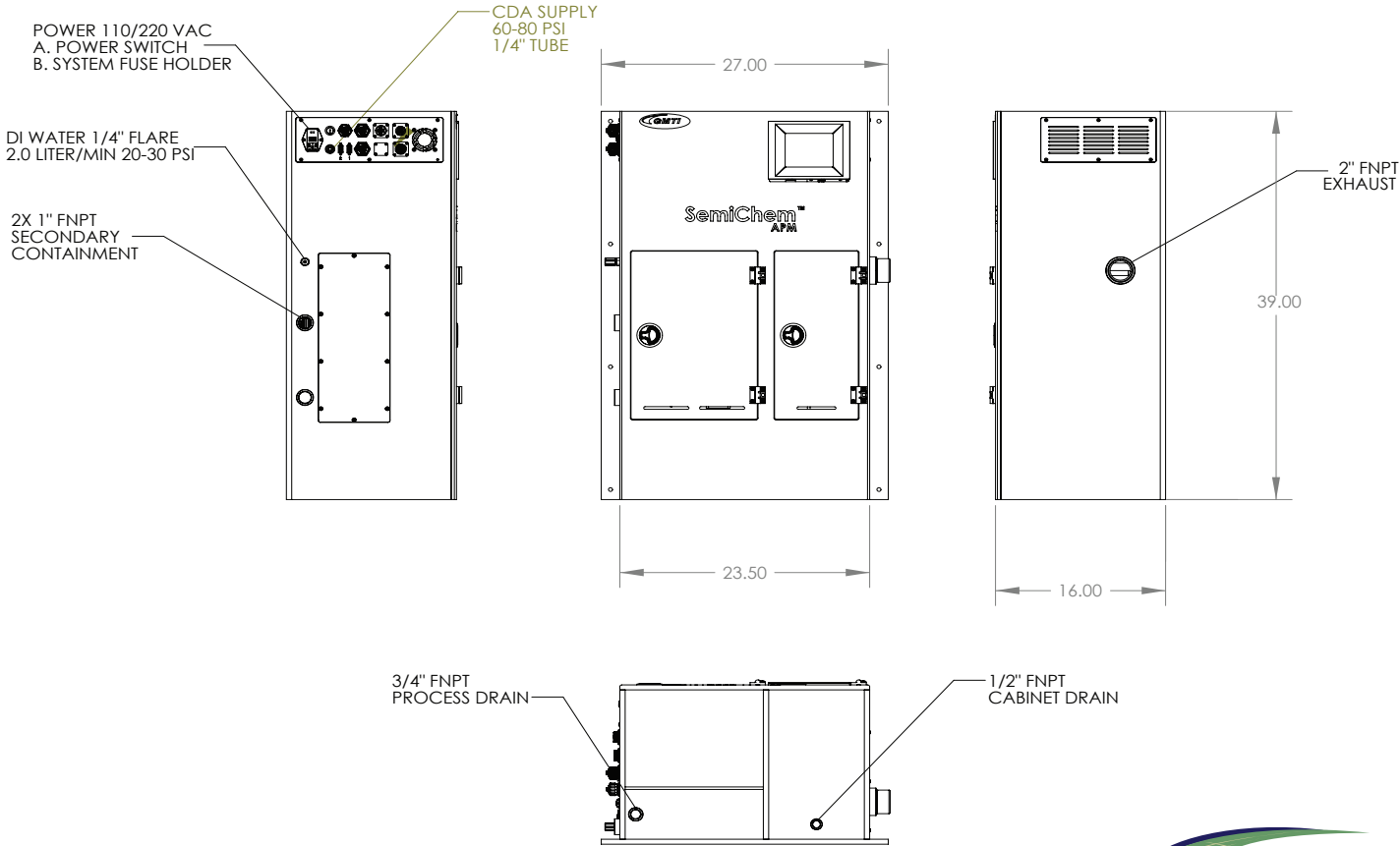
Wallmount

Product Features

- 4 4...20mA Analog Outputs
- 8 Programmable relays
- Ethernet & RS232 Serial
- Color Touchscreen
- Single 200mL Measuring Cell
- Integrated Reagent Storage
- Single Sample Point
- 1 5ml Digital Burette
- Multiple Sensor Inputs

Product Options

- Dual Sample Points
- Additional 5ml Digital Burette
- Additional Sensors
- Safety Interlocks
- Reagent Low Level Detection

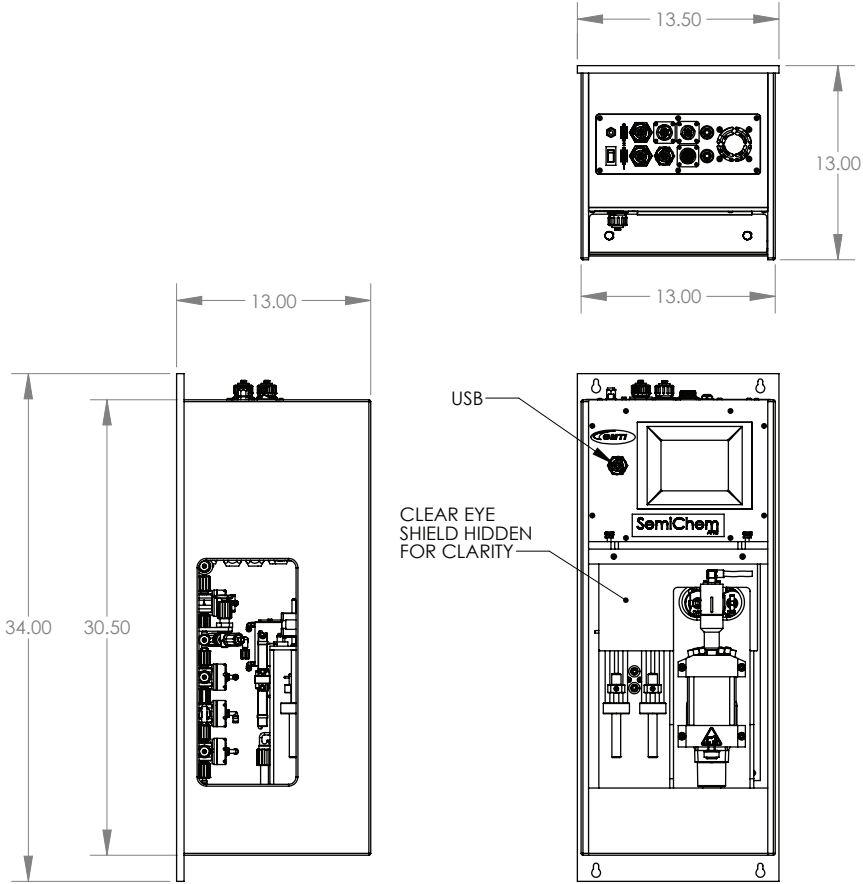


Product Features

- Designed for full process tool integration*
- 4 4...20mA Analog Outputs*
- 8 Programmable relays*
- Ethernet & RS232 Serial*
- Color Touchscreen*
- Low Voltage (24Vdc) Operation*
- Single 200mL Measuring Cell*
- Single Sample Point*
- 1 5ml Digital Burette*
- Multiple Sensor Inputs*

Product Options

- Dual Sample Points*
- Additional 5ml Digital Burette*



SemiChem APM

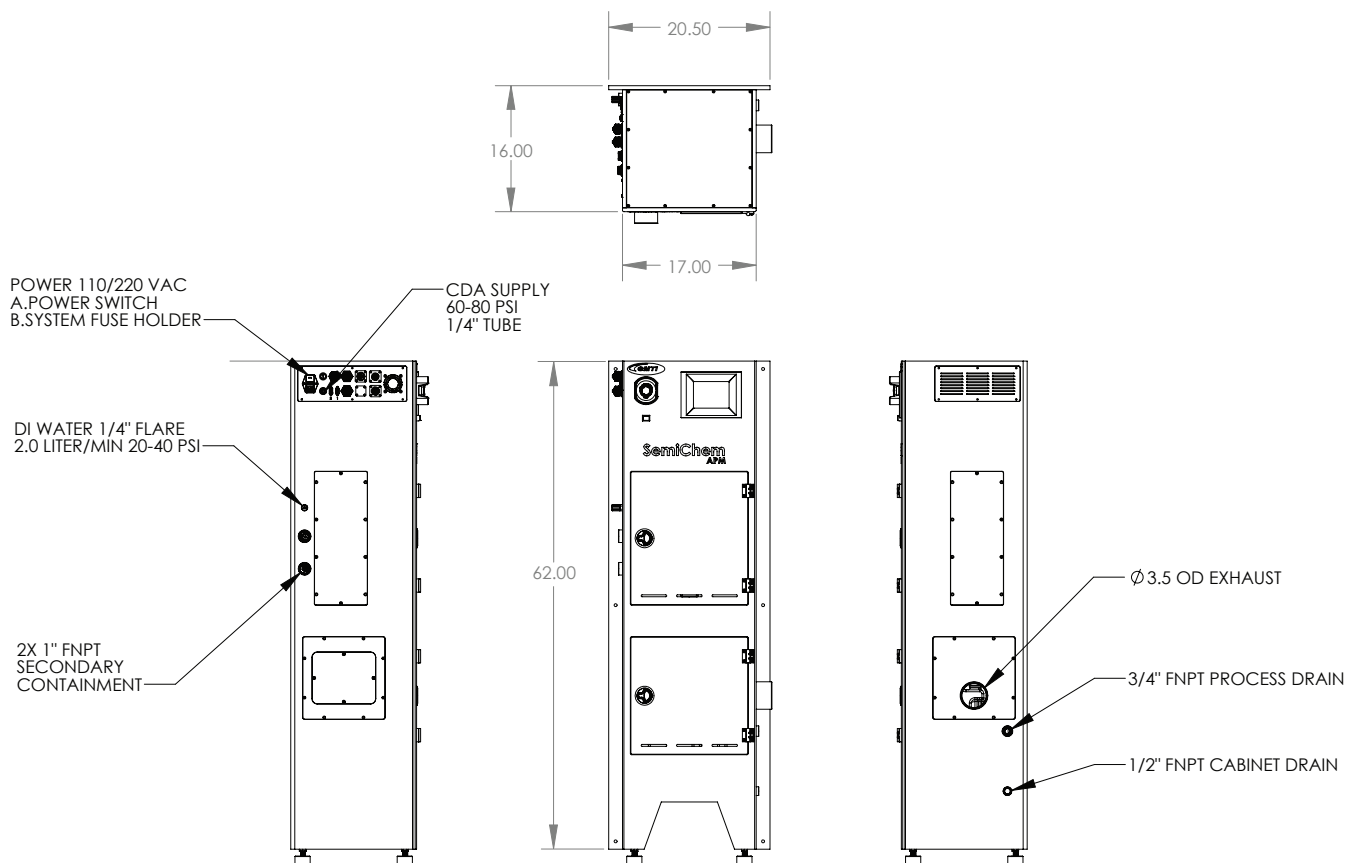
Floormount

Product Features

- 4 4...20mA Analog Outputs
- 8 Programmable relays
- Ethernet & RS232 Serial
- Color Touchscreen
- Single 200mL Measuring Cell
- Integrated Reagent Storage
- Single Sample Point
- 3 5ml Digital Burette
- Multiple Sensor Inputs

Product Options

- Dual Sample Points
- Additional 5ml Digital Burette
- Additional Sensors
- Safety Interlocks
- Reagent Low Level Detection



SemiChem APM

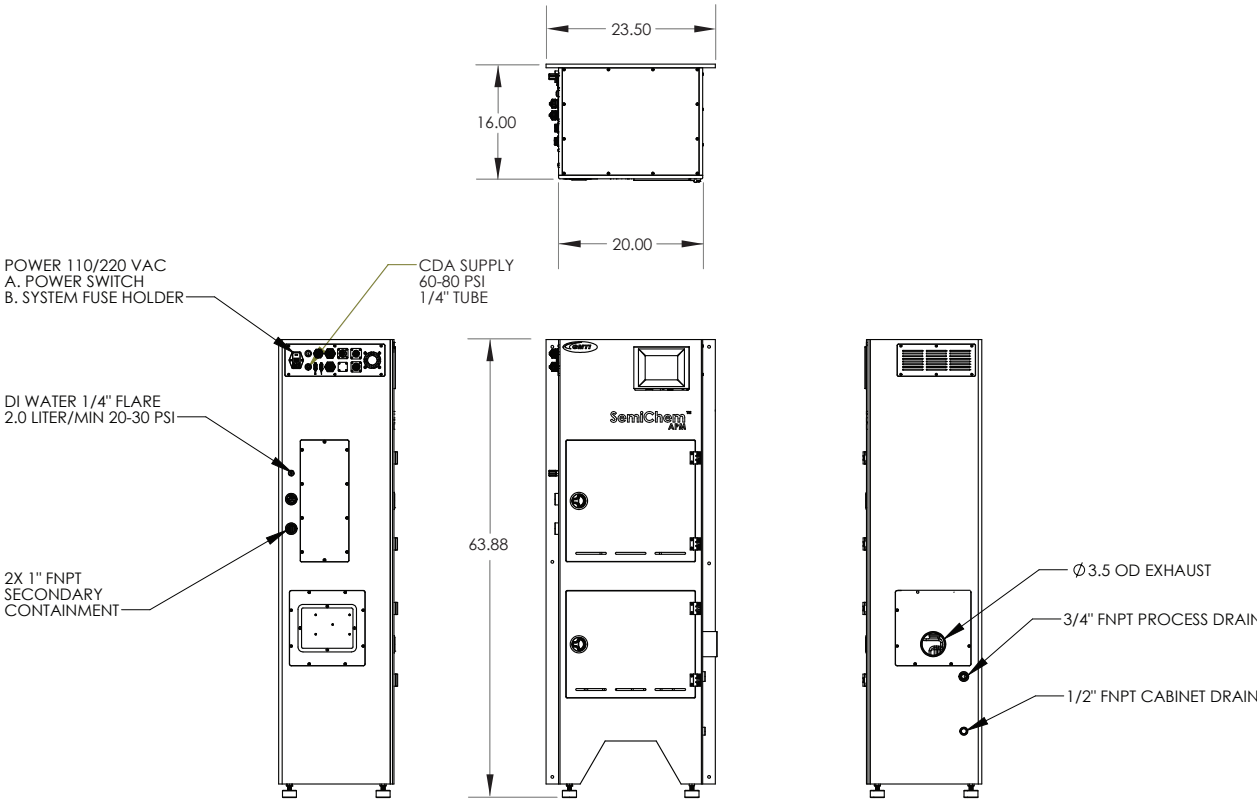
Dual Cell

Product Features

- 4 4...20mA Analog Outputs
- 8 Programmable relays
- Ethernet & RS232 Serial
- Color Touchscreen
- Dual 200mL Measuring Cell and Dual Sample Capture Loops
- Integrated Reagent Storage
- Single Sample Point
- 4 5ml Digital Burette
- Multiple Sensor Inputs

Product Options

- Dual Sample Points
- Additional Sensors
- Safety Interlocks
- Reagent Low Level Detection

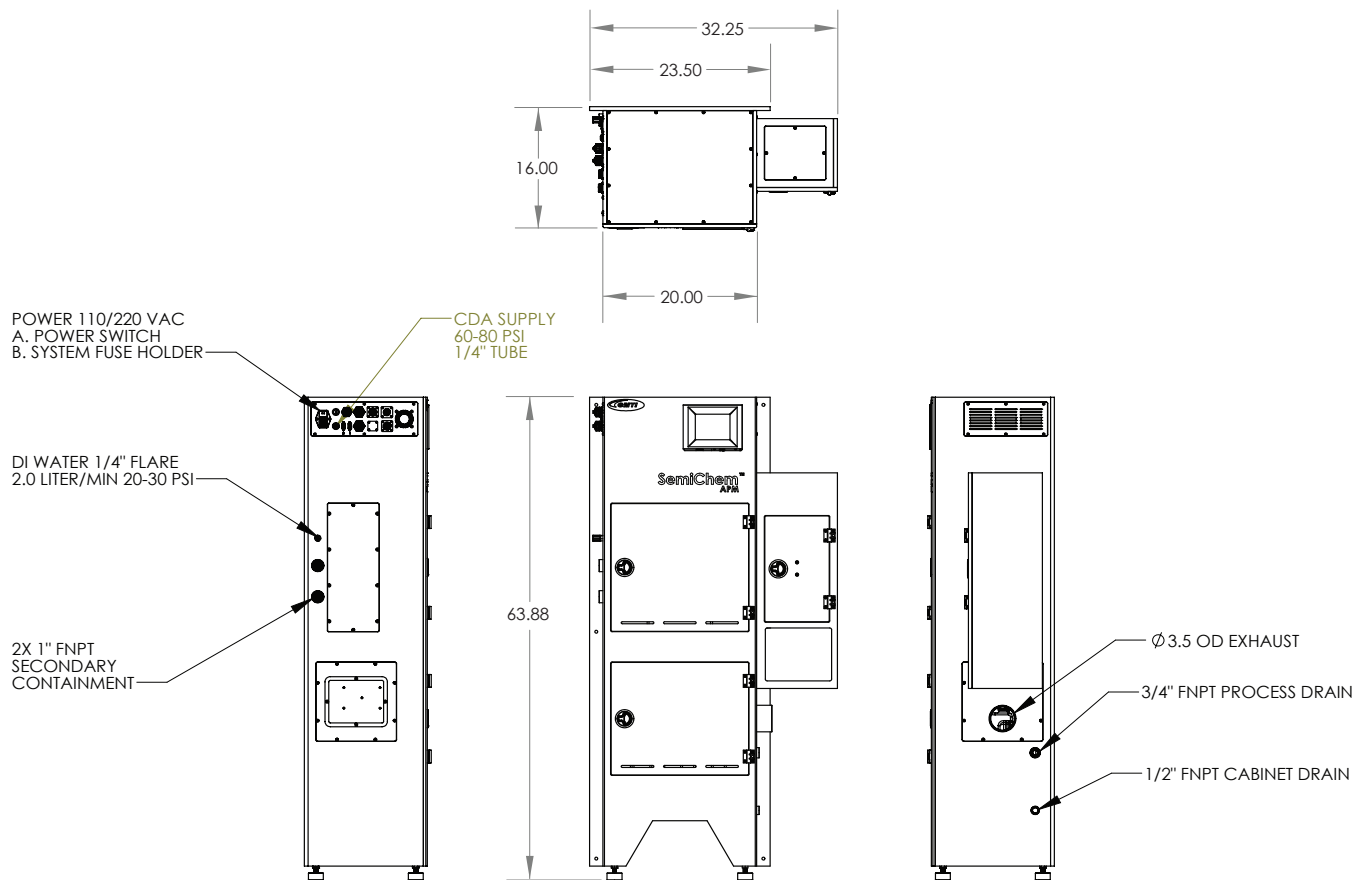


Product Features

- Integrated Grab-Port for offline manual sampling*
- 4 4...20mA Analog Outputs*
- 8 Programmable relays*
- Ethernet & RS232 Serial*
- Color Touchscreen*
- Dual 200mL Measuring Cell and Dual Sample Capture Loops*
- Integrated Reagent Storage*
- Single Sample Point*
- 4 5ml Digital Burette*
- Multiple Sensor Inputs*

Product Options

- Dual Sample Points*
- Additional Sensors*
- Safety Interlocks*
- Reagent Low Level Detection*



Performance Specifications

Analysis Methods	Potentiometry/Standard Addition/Photometry
Accuracy ¹	+/- 0.2% of Displayed Value
Precision ¹	+/- 0.2% Relative Error
Measurement Time	Less than 5 minutes/analysis (application dependent)
Calibration Interval	at start-up ²
Sample Consumption	less than 5mls/analysis
Sample Size	0.05 to 5mls (application dependent)
Sample Temperature	up to 200°F (93°C)

System Facility Requirements³

Sample Inlet/Return	less than 30psi 0.5 liter/minute 1/4" OD flare fitting
Deionized Water	20-40psi 2.0 liters/minute 1/4" OD flare fitting
CDA	60-80psi 1/4" OD quick fitting
Power	110-220 VAC, 50/60Hz, 1.0/0.5A Universal

1. Refers to "hardware" only. External factors such as application, chemistry, and process conditions can affect system accuracy and precision

2. This does not include calibration of pH or Ion Selective sensor. Please refer to the User's Guide for more information.

3. For a complete list of required facilities, refer to the SemiChem APM User's Guide.

GMT, Inc. believes the data contained herein are factual, and the opinions expressed are of qualified experts regarding the results of conducted tests, the data are not to be taken as warranty or representation which GMT, Inc. assumes legal responsibility. The data are offered solely for consideration, investigation, and verification. Any use of these data and information must be determined by the user to be in accordance with federal, state, and local laws and regulations. All specifications are subject to change without notice.

Local Distributor

Global Measurement Technologies, Inc.
7225 West Oakland Street
Chandler, Arizona 85226
U.S.A.

Tel: +1-480-889-0263
Fax: +1-480-858-1802
Email: info@gmtechinc.com
web: www.gmtechinc.com



SemiChem APM 200 Series
Please consider Mother Earth before printing this brochure. If printed,
please recycle when finished.
©2016

